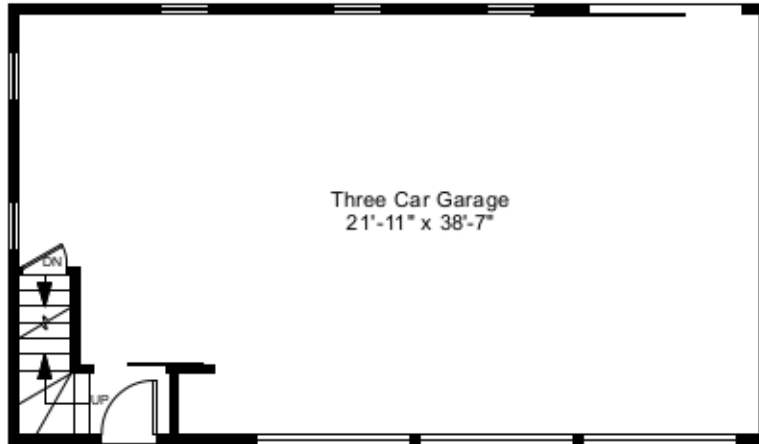
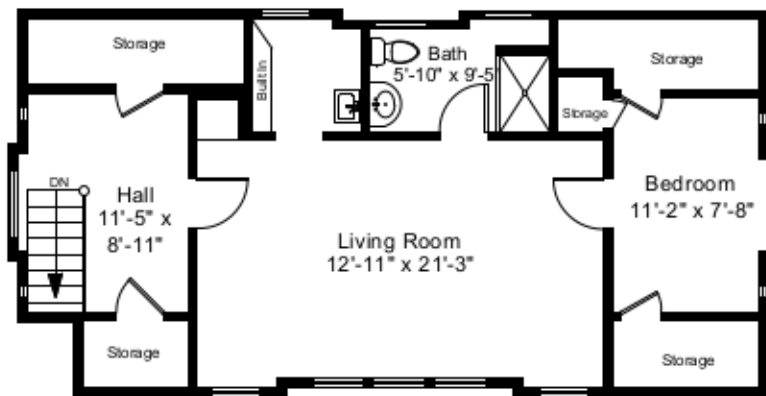


Carriage House
Square Footage Calculations
 First Floor = 907 SF
 Second Floor = 618 SF
 Total Building Area = 1,525 SF
Total Finished Area = 662 SF

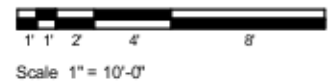


Carriage House - First Floor Plan
 Ceiling Height = 9'-0"

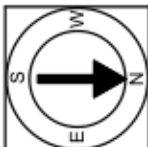


Carriage House - Second Floor Plan
 Ceiling Height = 7'-4"

120 Grotto Avenue
 Providence, RI 02906



4



Completed: May 2018

Note: Dimensions are not guaranteed and are provided for informational purposes only. Individual room dimensions are not used to calculate overall square footage.

NATIONAL
 FLOOR PLANS
 & PHOTOGRAPHY
 (800) 328-0217